



# Celebrating Euan's Legacy

---

A public event celebrating the legacy of the late Euan MacDonald MBE featuring the Euan MacDonald Centre for MND Research, Euan's Guide and SpeakUnique

**John McIntyre Conference  
Centre, Edinburgh**

Weds 8th October 2025

We are delighted to welcome you to this special event in tribute to Euan MacDonald.

Euan, who lived with motor neuron disease (MND) for over 20 years, died in 2024.

Euan's many achievements included founding the Scotland-wide **Euan MacDonald Centre for MND Research**, disabled access charity **Euan's Guide**, and digital speech technology spin-out **SpeakUnique**.

This afternoon we are joining together to honour and build upon this remarkable legacy.





# EUAN MACDONALD CENTRE

Vital research into motor neuron disease

The Euan MacDonald Centre for Motor Neuron Disease Research is based at the University of Edinburgh. It is a charitable network of over 250 scientists and doctors across Scotland.

Our mission is to use research to improve the lives of people living with MND and related conditions.

We aim to make discoveries that will slow, stop and eventually reverse MND. We undertake cutting-edge laboratory research and lead the largest-ever clinical trial of MND in the UK, MND-SMART.

As well as funding research and bespoke PhD studentships, the Centre provides a network for scientists, clinicians and health professionals involved in MND research in Scotland.



# Programme

14.00	<b>Arrivals</b>	
14.10	Welcome	Prof Siddharthan Chandran
14.20	<b>Euan's legacies</b> Euan's Guide: Real reviews. Real voices. SpeakUnique: The future of voice technology for health	Chaired by Chloe Kippen Kiki MacDonald, Joe Logue and Antonia Lee-Bapty Olivia Szczerbakiewicz and Dr Oliver Watts
15.00	<b>Euan MacDonald Centre research snapshots</b> Spot the Difference – Finding changes to protein production in MND Why do some people with MND survive longer than others? Finding the missing pieces and solving the puzzle: blood biomarkers in MND	Chaired by Prof Siddharthan Chandran Dr Hannah Smith Jade Lucas Dr Hatice Bozkurt
15.20	<b>Refreshment break</b>	<b>Browse information stands and academic posters</b>
16.00	<b>Public lecture</b> The Euan MacDonald Centre: Making a difference	Introduced by Prof David Argyle Prof Siddharthan Chandran, Prof Suvankar Pal and Bruce Virgo
17.00	<b>Wine reception</b>	<b>Browse information stands and academic posters</b>
18.30	<b>Close</b>	

# Faces of today



**Prof Siddharthan Chandran**

Director of the Euan MacDonald Centre and UK Dementia Research Institute



**Chloe Kippen**

Director of Philanthropy and College Advancement, University of Edinburgh



**Kiki MacDonald**

Co-Founder of Euan's Guide



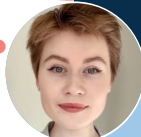
**Joe Logue**

Community Manager, Euan's Guide



**Antonia Lee-Bapty**

CEO, Euan's Guide



**Olivia Szczerbakiewicz**

Customer Support & Experience Executive, SpeakUnique



**Dr Oliver Watts**

Chief Technology Officer, SpeakUnique



**Dr Hannah Smith**

Postdoctoral Research Fellow, University of Edinburgh



**Jade Lucas**

PhD student, University of Edinburgh



**Dr Hatice Bozkurt**

Clinical PhD Fellow, University of Edinburgh



**Prof David Argyle**

Vice Principal and Head of College of Medicine and Veterinary Medicine, University of Edinburgh



**Prof Suvankar Pal**

Chair of Neurodegenerative Disorders and Clinical Trials, University of Edinburgh



**Bruce Virgo**

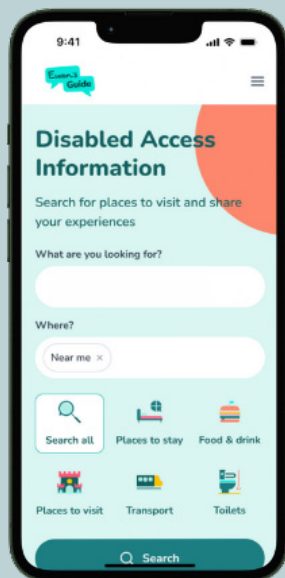
Retired maritime solicitor, MND/ALS Advocate, member of MND-SMART Patient Advisory Group



Founded by Euan MacDonald and his sister Kiki, Euan's Guide is the award-winning disabled access charity that helps disabled people, their families and carers find and share accessible places to go. What began as a small idea has grown into a nationwide (and increasingly international) community, powered by lived experience.

Join us to hear from Euan's sister and Co-Founder Kiki MacDonald, Community Manager Joe Logue and CEO Antonia Lee-Bapty as they reflect on Euan's vision, the platform's impact, and what comes next.

Discover how disabled people are changing the way the world talks about disabled access — one review at a time.





# SpeakUnique

SpeakUnique creates personalised synthetic voices for use in communication aids, by people whose speech is affected through a medical condition.

Our synthetic voices can either be a replica of an individual's own voice or designed based on desired characteristics such as regional accent, cultural influences, age and gender.

Based on many years of research at the University of Edinburgh, SpeakUnique offers a simple and quick way for people to create a personalised synthetic voice — including for people with impaired or unintelligible speech.

SpeakUnique makes voice banking accessible to all communication aid users.





# Thank you for coming!

If you would like to find out more, please visit our websites, and follow us on social media.



[www.euanmacdonaldcentre.org](http://www.euanmacdonaldcentre.org)



[www.euansguide.com](http://www.euansguide.com)



[www.speakunique.co.uk](http://www.speakunique.co.uk)